

FOR SALE

High Image Corporate HQ/R&D Building
59,230 Sq. Ft. on 3.03 Acre Land Site



16542 Millikan Ave.
Irvine, CA

PROPERTY FEATURES

- High Image, with Extensive Two-Story Glassline
- ±20,000 SF Two-Story Corporate Office Area
- ±10,000 SF Air-Conditioned Lab Area
- ±29,230 SF Full Height Warehouse Area
- 2.2:1 Parking (Expandable)
- ±22' Minimum Ceiling Clearance
- Fully Fire Sprinklered
- Two (2) 12'x12' GL and One (1) DH Door
- 1,600 Amps, 277/480 Volt, 3-Phase Power
- Barranca Parkway frontage and visibility
- Directly across street from The District retail project
- Flexible 5.1 IBC Zoning
- Potential re-uses of property include Multi-Family Residential, Public Storage, Retail, Hotel, and Assisted Living
- Prime IBC location with direct access to the 405, 55, 5 freeways and 261 Corridor

Exclusive Agents:

Scott Read

Newmark Knight Frank

949.608.2007

sread@ngkf.com

CA RE License #01029250

Tim Strader, Jr.

Starpointe Ventures

949.622.0420

tj@starpointeventures.com

CA RE License # 00969238

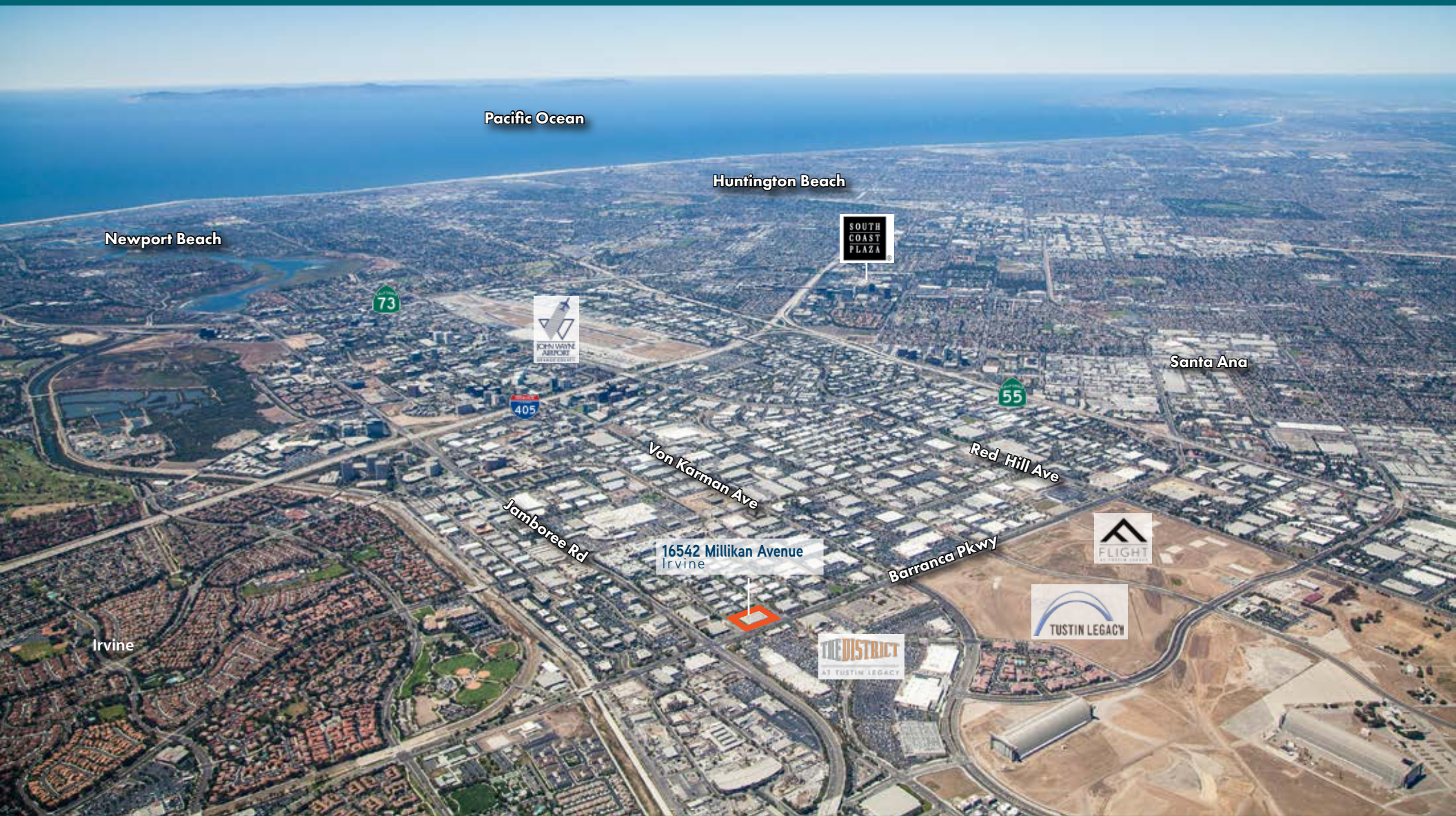
4675 MacArthur Court, Suite 1600, Newport Beach, CA 92660

Corporate CA RE License #01355491

**Newmark
Knight Frank**



Local Aerial Photo



Exclusive Agents:

Scott Read

Newmark Knight Frank

949.608.2007

sread@ngkf.com

CA RE License #01029250

Tim Strader, Jr.

Starpointe Ventures

949.622.0420

tj@starpointeventures.com

CA RE License # 00969238

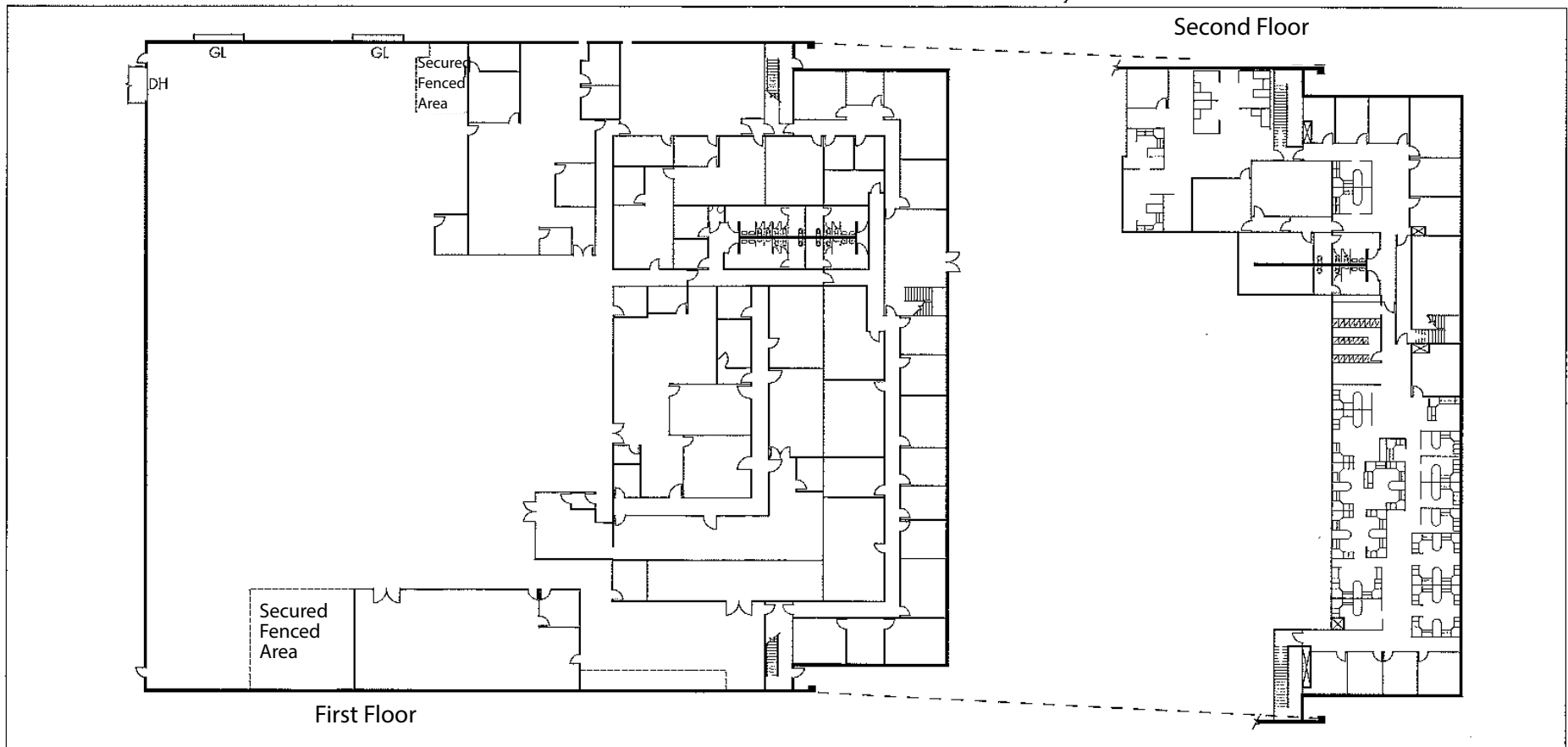
**Newmark
Knight Frank**

4675 MacArthur Court, Suite 1600, Newport Beach, CA 92660

Corporate CA RE License #01355491



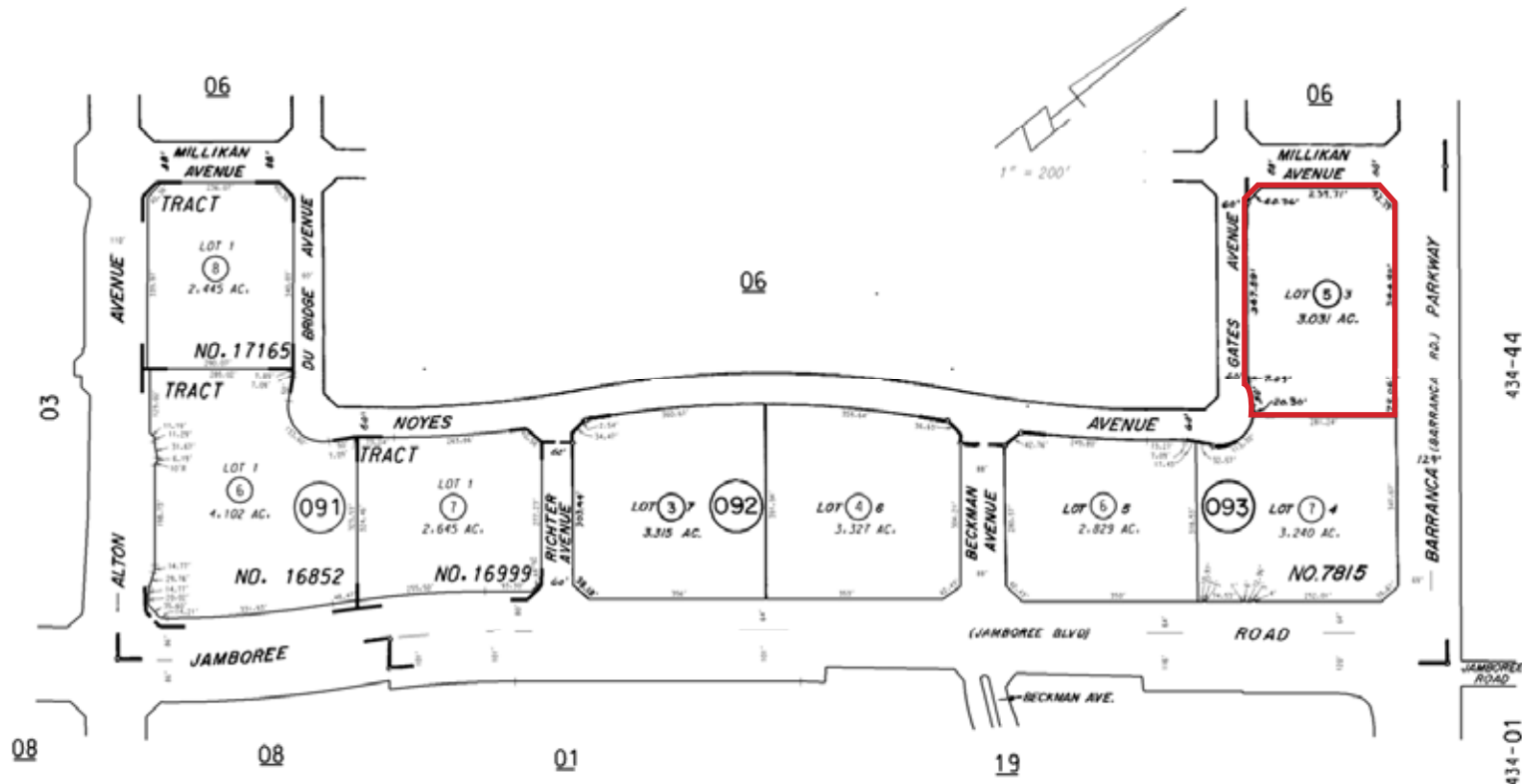
Existing Building Floor Plans



Parcel Map

THIS MAP WAS PREPARED FOR ORANGE COUNTY ASSESSOR (DEPT. PURPOSES ONLY). THE ASSESSOR MAKES NO GUARANTEE AS TO ITS ACCURACY NOR ASSUMES ANY LIABILITY FOR OTHER USES. NOT TO BE REPRODUCED. ALL RIGHTS RESERVED. © COPYRIGHT ORANGE COUNTY ASSESSOR 2015

435-09



MARCH 1974

TRACT NO. 7815 M.M. 334-8 to 11 incl.
 TRACT NO. 16852 M.M. 899-21 to 23 incl.
 TRACT NO. 16999 M.M. 906-30, 31
 TRACT NO. 17165 M.M. 933-27, 28

NOTE - ASSESSOR'S BLOCK & PARCEL NUMBERS SHOWN IN CIRCLES
 ASSESSOR'S MAP BOOK 435 PAGE 09 COUNTY OF ORANGE

Exclusive Agents:

Scott Read Newmark Knight Frank 949.608.2007 sread@ngkf.com CA RE License #01029250
Tim Strader, Jr. Starpointe Ventures 949.622.0420 tj@starpointeventures.com CA RE License # 00969238

4675 MacArthur Court, Suite 1600, Newport Beach, CA 92660 Corporate CA RE License #01355491



Aerial



Exclusive Agents:

Scott Read

Newmark Knight Frank

949.608.2007

sread@ngkf.com

CA RE License #01029250

Tim Strader, Jr.

Starpointe Ventures

949.622.0420

tj@starpointeventures.com

CA RE License # 00969238

**Newmark
Knight Frank**

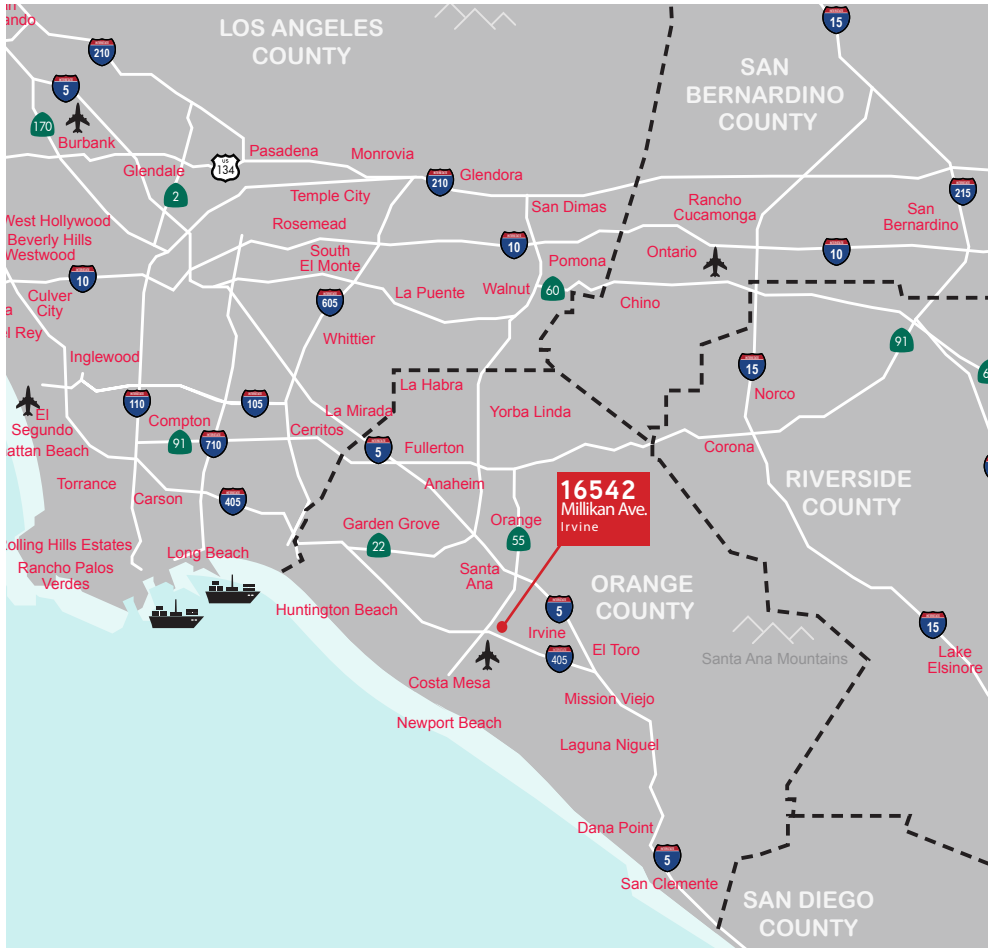
4675 MacArthur Court, Suite 1600, Newport Beach, CA 92660

Corporate CA RE License #01355491

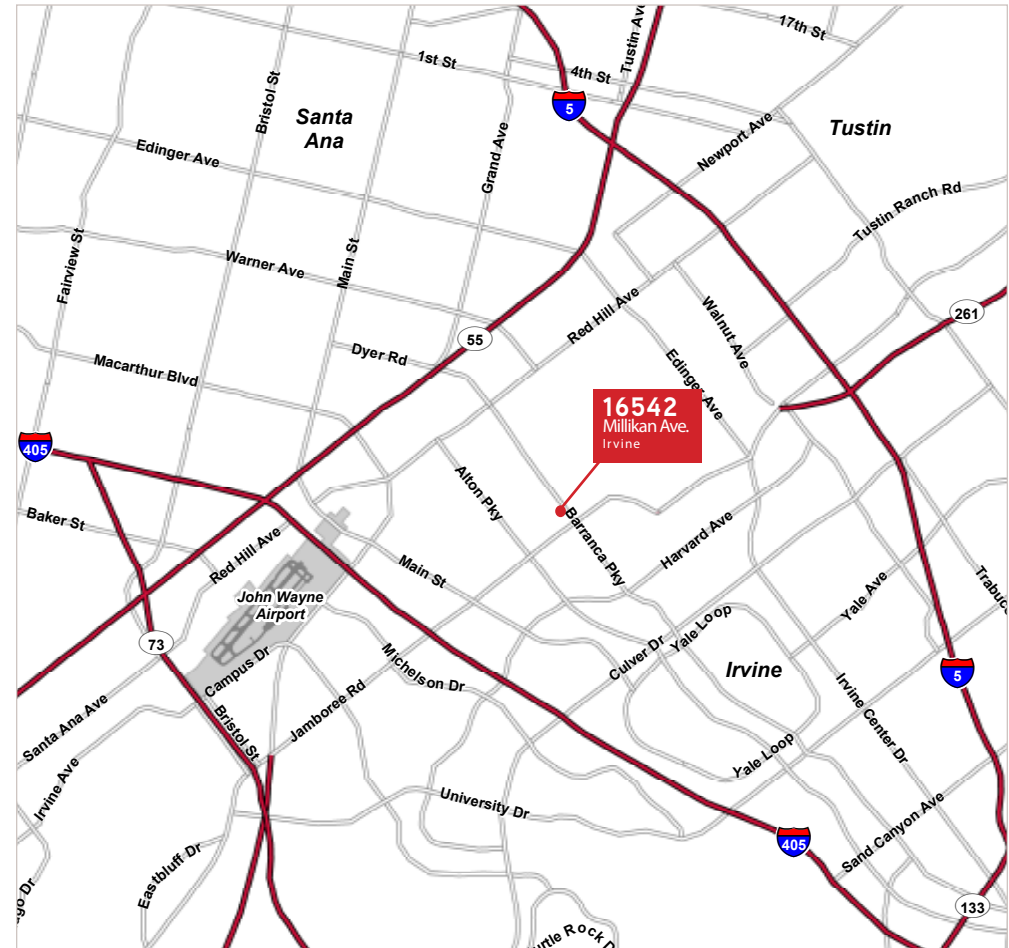


Location Maps

Regional Map



Local Map



Exclusive Agents:

Scott Read

Newmark Knight Frank

949.608.2007

sread@ngkf.com

CA RE License #01029250

Tim Strader, Jr.

Starpointe Ventures

949.622.0420

tj@starpointeventures.com

CA RE License # 00969238

Procuring broker shall only be entitled to a commission, calculated in accordance with the rates approved by our principal only if such procuring broker executes a brokerage agreement acceptable to us and our principal and the conditions as set forth in the brokerage agreement are fully and unconditionally satisfied. Although all information furnished regarding property for sale, rental, or financing is from sources deemed reliable, such information has not been verified and no express representation is made nor is any to be implied as to the accuracy thereof and it is submitted subject to errors, omissions, change of price, rental or other conditions, prior sale, lease or financing, or withdrawal without notice and to any special conditions imposed by our principal.

